



I-49 South @ Verot School Road

**Lafayette Parish, Louisiana
State Project No. H.011235.5
F.A.P. No. H011235**

Public Meeting

**September 27, 2017
4:00PM to 7:00PM**



Good Evening and Welcome to this evening's public meeting for the Future I-49 South @ Verot School Road Project

TEAM MEMBERS

LEAD AGENCIES:



IN COORDINATION WITH:



CONSULTING FIRMS:



FUTURE I-49 SOUTH @ VEROT SCHOOL ROAD



Tonight's meeting is being presented to you by the Louisiana Department of Transportation and Development and the Federal Highway Administration in coordination with the Lafayette Consolidated Government.

The meeting has been prepared and coordinated by the department's design consultants Huval & Associates, C.H. Fenstermaker & Associates, and Neel-Schaffer.... All of which are located here in Lafayette, Louisiana.

PURPOSE OF TONIGHT'S MEETING

- Provide information regarding proposed changes to the design of the future interchange of Verot School Road and U.S. Highway 90 (Future I-49 South);
- Allow the public time to review project exhibits;
- Offer the public an opportunity to speak informally with representatives from the Project Team; and
- An opportunity for the public to provide comments verbally and in writing.

FUTURE I-49 SOUTH @ VEROT SCHOOL ROAD



The purpose of tonight's meeting is to provide an update on the project since the environmental impact statement and record of decision were completed in 2005.

This includes:

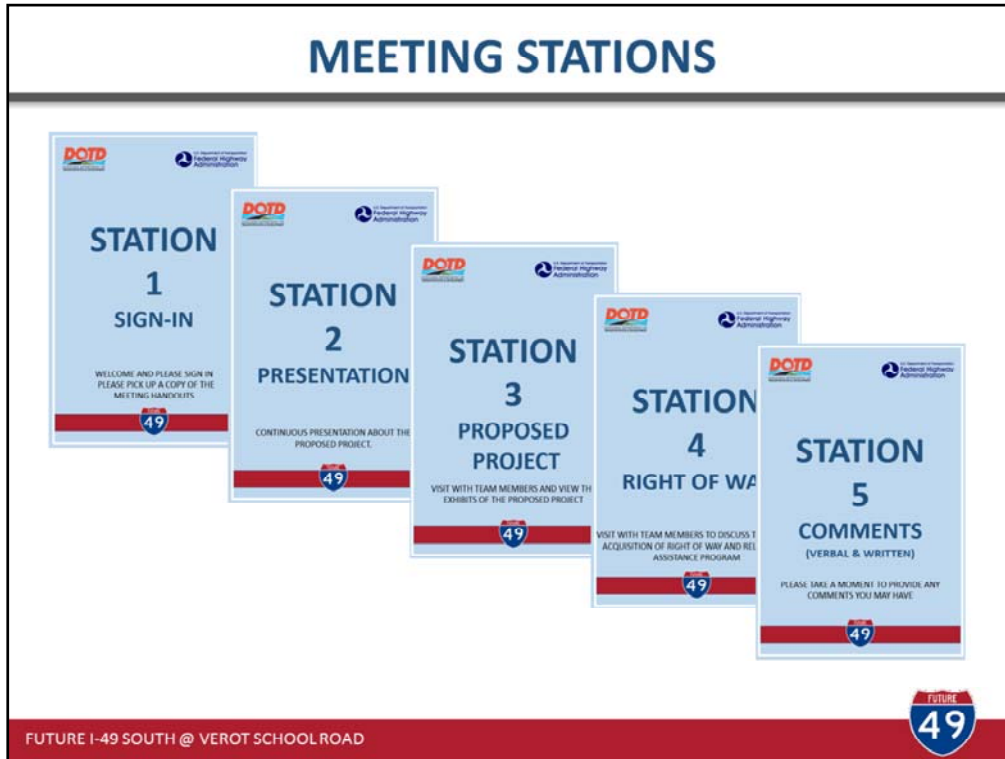
- Providing information regarding proposed changes to the design of the intersection of Verot School Road and U.S. Highway 90 (Future I-49 South);
- Provide opportunity for the public to review the project exhibits;
- Offering the public an opportunity to speak informally with representatives from the project team; and
- Provide opportunity [for the public to provide comments verbally and in writing](#)

MEETING FORMAT

- Open house format;
- Continuous multi-media presentation;
- View project exhibits;
- Visit with project representatives; and
- Provide verbal or written comments



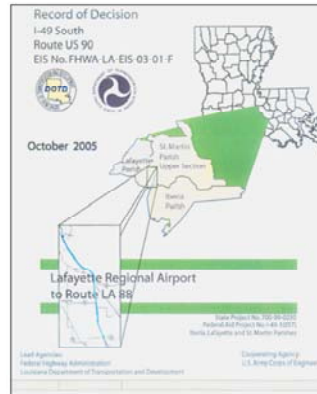
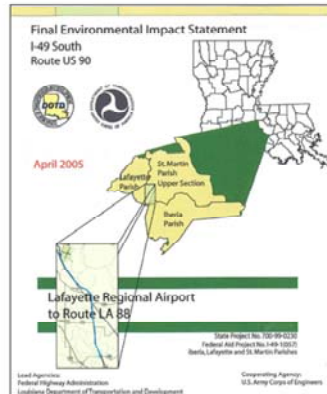
The meeting will follow an open house format. The format includes a continuous multimedia presentation about the project which you are watching at this time. Project exhibits are available for viewing which provide information about the project. Representatives from DOTD and its consultants are present tonight to answer questions and discuss issues related to the project. Verbal comments can be recorded and written statements can be submitted at tonight's meeting. Written statements can also be mailed to the Department of Transportation and Development and should be postmarked no later than October 9, 2017 to be included in the meeting transcript.



Tonight's meeting consists of five separate stations that you can visit at your leisure. The first station consists of the public meeting sign-in record. You should have received a handout of information and a comment form should you want to comment on tonight's meeting or about the project. Station 2 is the station at which you are currently located. It consists of viewing this presentation to get a brief project history and learn about some of the elements of the project that are being modified as compared to the original study completed in 2005. Station 3 allows you to view project exhibits and discuss the project details with team members at your own pace and leisure. Station 4 allows you to speak with representatives of the department of transportation and development concerning the right-of-way acquisition and relocation assistance program should project improvements have a direct impact to your property. Station 5 allows you to submit written comments on the comment form provided to you at station 1, or have your comments verbally recorded for the project record. Please feel free to visit with our team members at any time tonight.

PROJECT HISTORY

- Final Environmental Impact Statement: April 2005
- Record of Decision: October 2005



FUTURE I-49 SOUTH @ VEROT SCHOOL ROAD



The Louisiana Department of Transportation and Development proposed the project and the Federal Highway Administration approved an environmental study titled "Final Environmental Impact Statement, I-49 South Route US 90, Lafayette Regional Airport to Route LA 88" dated April 2005 and made part of a Record of Decision in October of 2005. This study was prepared as part of the upgrade of U.S. Highway 90 through Lafayette Parish to a roadway meeting interstate standards. This section is part of the Future I-49 corridor. As part of the 2005 study, improvements to the existing intersection of US 90 and Verot School Road consisted of providing for a new alignment of Verot School Road on a bridge over the existing railroad and mainline of Future I-49 just north of the existing Verot School Road alignment.

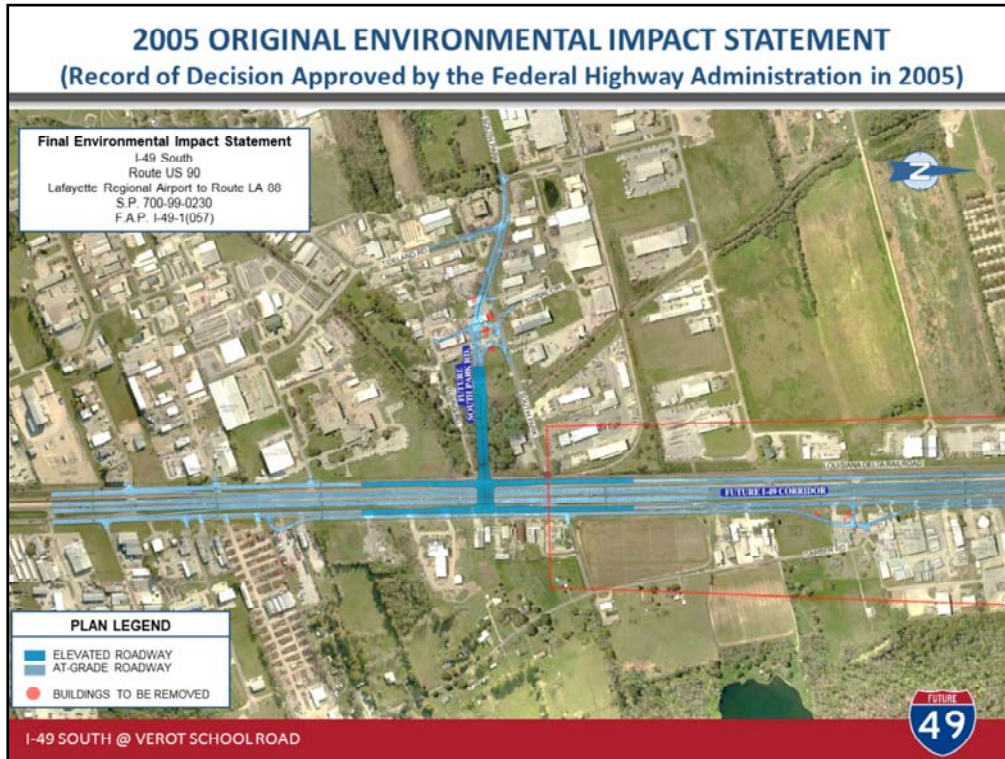
PROJECT HISTORY

- Completion of Environmental Process with Record of Decision for Future I-49 from Lafayette to LA 88:
 - October 2005
- DOTD Allocates Funding to Commence Design Process and Awards Contract to Design Consultant:
 - June 2016
- Consultant proposes design enhancements and updates to the conceptual design previously approved in Record of Decision.

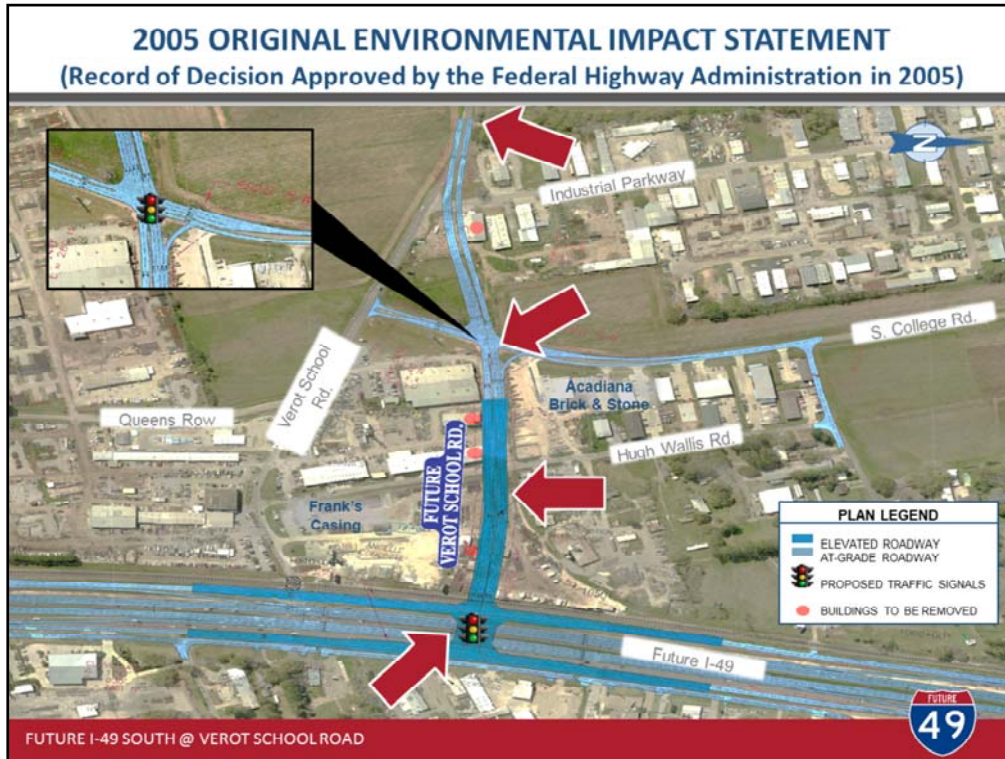
FUTURE I-49 SOUTH @ VEROT SCHOOL ROAD



After completion of the environment process, the Department of Transportation and Development allocated funding to commence the design process. A design contract was awarded to a consultant in June of 2016. Several design enhancements and updates to the conceptual design previously approved in the 2005 record of decision are being proposed to improve mobility and compliance with current design guidelines.



This illustration shows the original conceptual design from the 2005 Final Environmental Impact Statement. The selected alternative in the original environmental document was a six-lane fully controlled interstate with local access frontage roads. An additional two-way service road was provided along the east side of the corridor to provide access to adjacent properties. The 2005 environmental document addressed the Future I-49 corridor from Louisiana Highway 88 north to the Lafayette Regional Airport. The Verot School Road Interchange that was made part of the Record of decision approved by the Federal Highway Department is illustrated here. The project limits commence just north of the existing intersection of Southpark and U.S. Highway 90 and terminate just south of the Lafayette Regional Airport.



The 2005 environmental document contained design elements which included

- The western project limit along existing Verot School Road just north of Industrial Parkway
- The realignment of Verot School Road from its current location to the north as shown.
- A signalized intersection at the realigned Verot School Road and South College Road
- A roadway overpass crossing the railroad and forming an elevated signalized interchange with Future I-49

CURRENT PROPOSED DESIGN



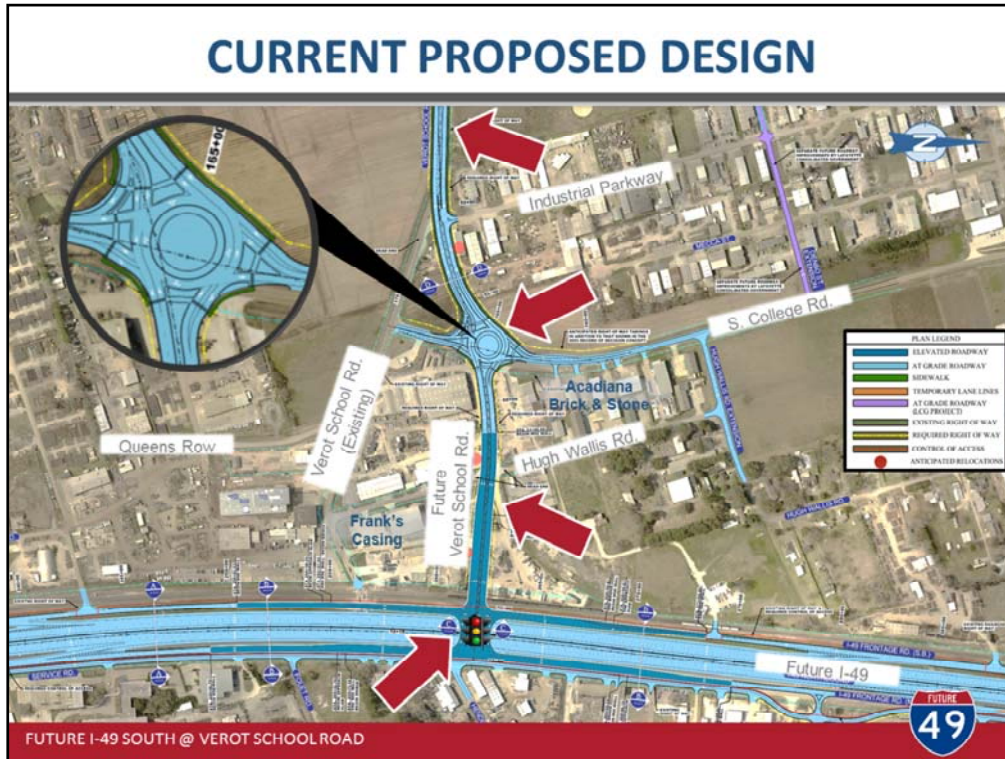
The current proposed design within the project limits follows the same overall concepts of the Record of Decision approved in 2005.

This includes the same proposed construction of a six-lane interstate utilizing one-way frontage roads and a local access service road along the east side of the Future I-49 corridor. Minor revisions are being proposed and presented to enhance mobility and compliance with current design standards. Both the project's southern and northern limits are designed to accommodate potential upgrades to the Future I-49 corridor as specified in the approved environmental documents.

CURRENT PROPOSED DESIGN



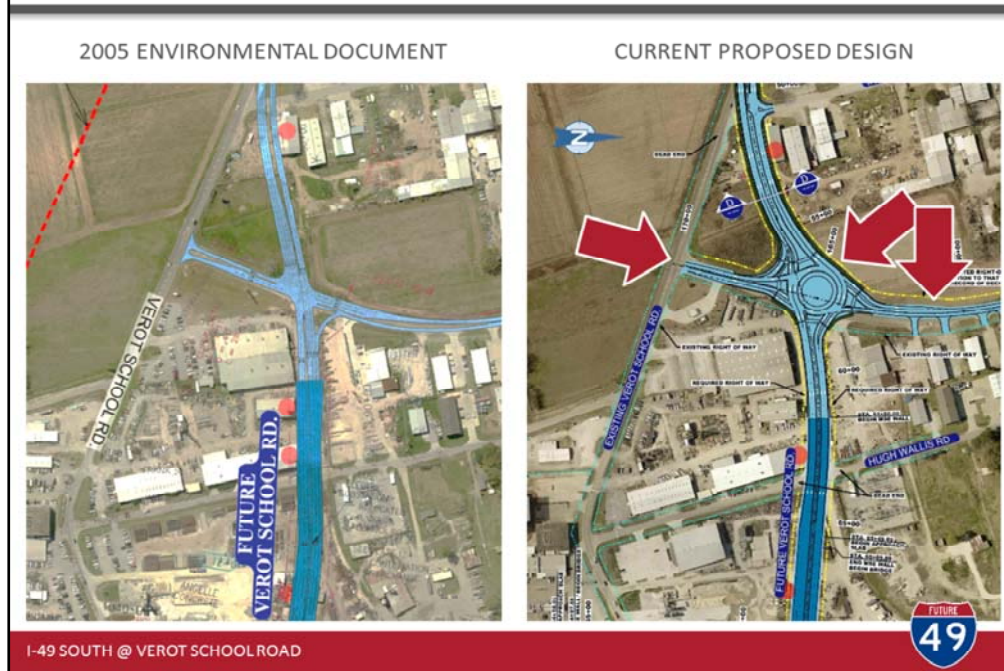
This animation illustrates improvements along the Verot School Road corridor from the Future I-49 interchange to the existing bridge located just east of Pinhook Road.



Let's take a look at the 2017 design of the Verot School Road corridor.

- The design includes the same realignment of Verot School Road as previously studied;
- The design also includes a multi-lane roundabout in lieu of a signal at the realigned Verot School Road and South College Road intersection;
- The same elevated signalized intersections of realigned Verot School Road and Future I-49 are designed as previously studied;
- Additionally, Verot School Road has been extended further to the west to now terminate at the existing bridge near Pinhook Road.

WHAT HAS CHANGED?

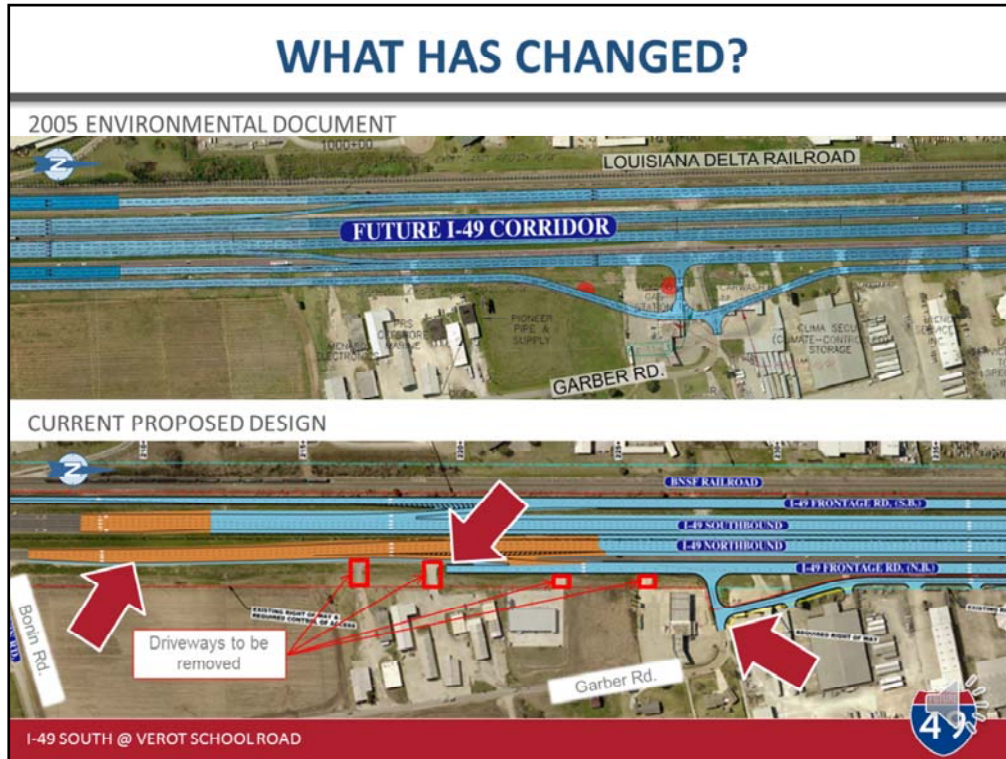


Let's review what has changed at the Verot School Road and South College Road intersection from what is shown in the 2005 environmental document.

A notable change in the current proposed design is the use of a multi-lane roundabout rather than a traffic signal. A traffic analysis was performed and concluded that a roundabout increases the efficiency of the intersection when compared to a standard signal. In addition, roundabouts have proven to be safer than signalized intersections.

Additionally, South College Road would be realigned slightly to the west in order to accommodate the proposed roundabout.

Indirect access to the existing Verot School Road alignment will be provided through the proposed roundabout and South College Road.



Let’s review what has changed along the Future I-49 corridor from the 2005 environmental document to the current design.

The 2005 environment document shows the complete Future I-49 Corridor extending past the Southpark Road interchange. The current design will connect to the existing U.S. Highway 90 roadway north of the Southpark Road Intersection until the Future I-49 Corridor is complete. Roadways shaded in orange indicate portions that will be reconstructed when further improvements are made to the corridor.

The beginning of the Frontage Road and Service roads at the southern limits of the project were designed to accommodate the final layout of the Future I-49 Corridor as proposed in the 2005 environmental document.

The current design proposes several driveways north of Bonin Road, east of the corridor along the proposed frontage and service roads to be removed to meet Louisiana Department of Transportation and Development’s access control requirements. Access for these properties can be made to and from Garber Road until further improvements along the corridor are made.

WHAT HAS CHANGED?

2005 ENVIRONMENTAL DOCUMENT



CURRENT PROPOSED DESIGN



I-49 SOUTH @ VEROT SCHOOL ROAD

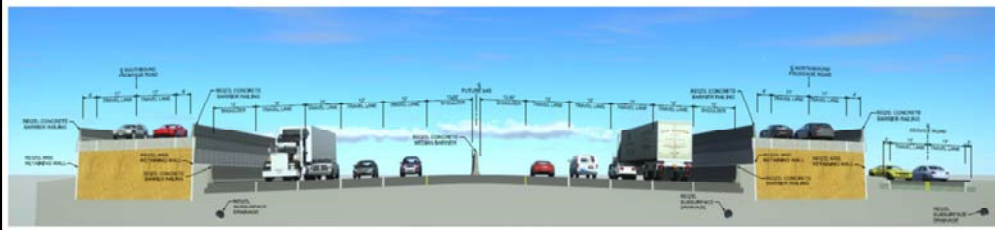


At the north end of the project corridor near the Lafayette Regional Airport, the 2017 design extends the service road to connect Perimeter Road to Alligator Road for better mobility and access to the Future I-49 corridor.

The I-49 northbound exit ramp at the location shown will be constructed, but not in use until future improvements are made to the Future I-49 corridor.

Similar to the southern end of the project, the current design will connect to the existing U.S. Highway 90 roadway near the Lafayette Regional Airport until future portions of the I-49 Corridor are constructed. Roadways shaded in orange indicate portions that will be reconstructed when further improvements are made to the corridor.

PROJECT DETAILS



FUTURE I-49 AND ELEVATED FRONTAGE ROADS



FUTURE I-49 AND AT-GRADE FRONTAGE ROADS

I-49 SOUTH @ VEROT SCHOOL ROAD

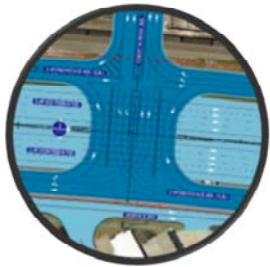


To provide a better understanding of the project improvements along the Future I-49 corridor, this illustration depicts two roadway sections of the I-49 corridor.

The top image depicts the roadway section near the Verot School Road interchange where the frontage roads are elevated.

The bottom image depicts the roadway section further away from Verot School Road interchange where the frontage roads are at ground level.

PROJECT DETAILS



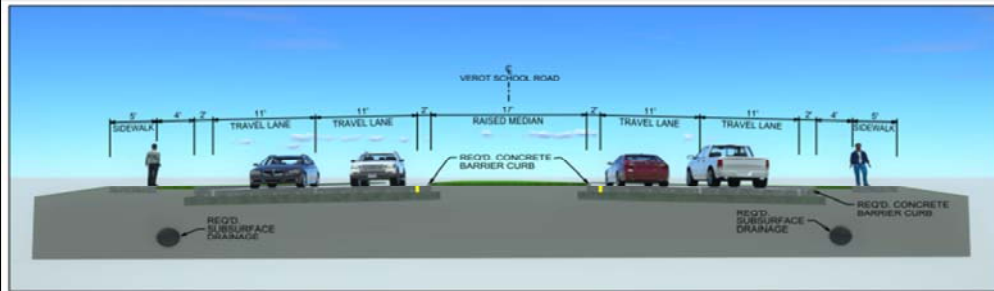
FUTURE I-49 AND FUTURE VEROT SCHOOL ROAD
GRADE-SEPARATED INTERCHANGE

I-49 SOUTH @ VEROT SCHOOL ROAD



This illustration depicts the Verot School Road interchange where it crosses Future I-49 as an elevated bridge structure.

PROJECT DETAILS



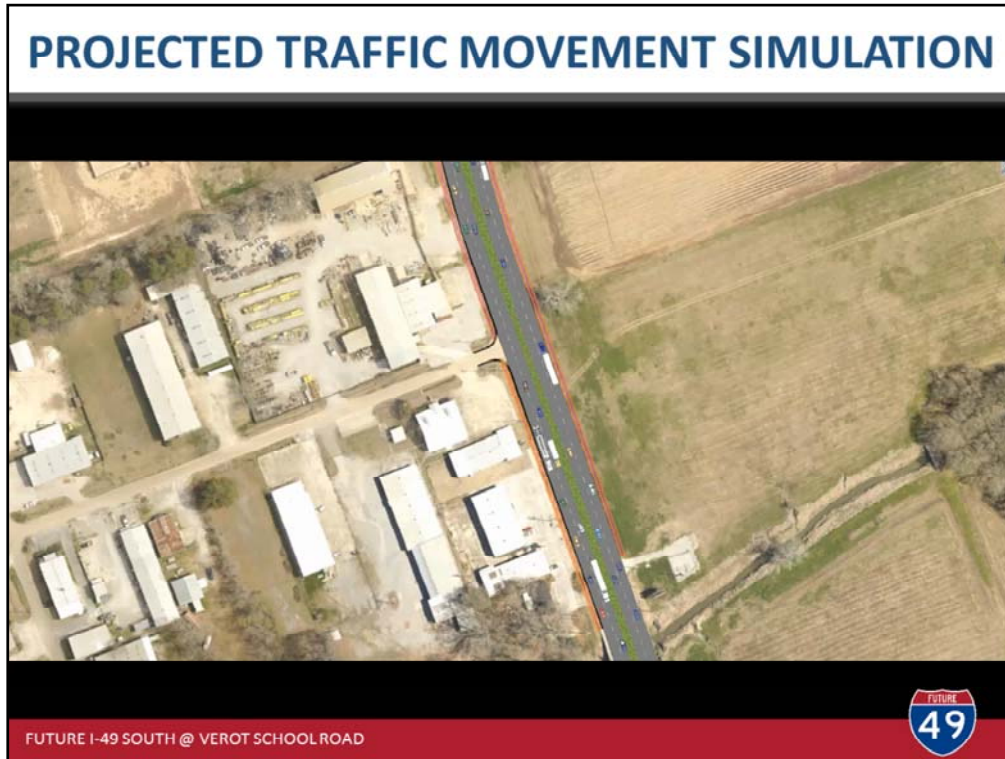
FUTURE VEROT SCHOOL ROAD



I-49 SOUTH @ VEROT SCHOOL ROAD

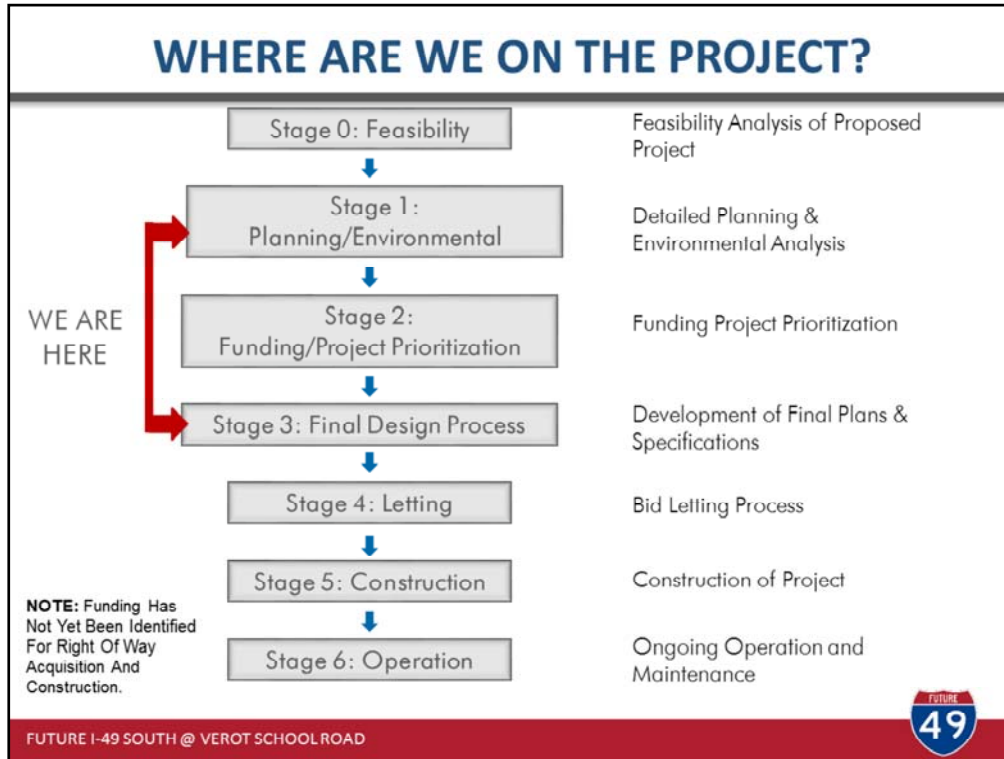


This illustration depicts a multi-lane divided roadway section of Verot School Road west of the roundabout within the project limits.



Now that you've seen the proposed design features, how will the traffic flow? As part of the 2017 design process, a traffic analysis was conducted that predicts traffic density and movement projections in the year 2040. The video being shown is a traffic simulation model that mathematically predicts traffic movements based upon travel demand, origin, destination routes, and various other variables. This tool helps designers to enhance the design to best serve the public for future conditions.

This video will run for approximately 5 minutes and then the presentation will resume.



The Louisiana Department of Transportation and Development has a streamlined 7-stage process to develop and deliver projects.

Stage 0: Involves the development of a “high level” planning and environmental analysis to determine if there are any “show stopping issues” that could cause the course of a project to be altered.

Stage 1: Is the process of performing detailed planning, environmental analysis, and preparing all appropriate environmental documentation.

Stage 2: Is the process of prioritizing funding for design, right of way acquisition, and construction.

Stage 3: Involves the development of engineering plans and specifications to construct the project

Stage 4: Is the process of obtaining bids and selecting a contractor to commence construction

Stage 5: Involves the Construction of the project

Finally, Stage 6: monitors the operation and maintenance of the project

This project is currently in Stage 3, however, re-evaluation of the Record of Decision is needed due to the length of time that has transpired since the 2005 approval and also due to the proposed changes presented this evening.

As previously stated, Stage 2 includes prioritizing funding sources for design and construction. Currently, funding has been secured by the department for design of the project. However, funding has not yet been identified for right of way acquisition and construction.

NEED TO UPDATE NEPA DOCUMENTS

- Proposed Design Modifications
- Traffic Analysis
- Environmental Impacts
- Update NEPA Documentation



As a result of the 2017 design modifications from the 2005 environmental document, minor updates to the environmental document will be required as part of the NEPA process. NEPA, which is an acronym for the National Environmental Policy Act, requires re-evaluation of projects that have aged more than 3 years with no progress since the original Record of Decision. The re-evaluation could be based on changes in policy, changes in the surrounding environment, or changes in design features of the project. This meeting tonight is part of the re-evaluation process.

WE WANT TO HEAR FROM YOU!

Please walk around and view the exhibits, ask questions to any of the project team members, and provide your comments.

Thank you for attending!

FUTURE I-49 SOUTH @ VEROT SCHOOL ROAD



This concludes our brief presentation of the proposed project. The Louisiana Department of Transportation, along with its federal partner, the Federal Highway Administration would like to thank you for watching this presentation.

Please proceed to Station 3 to visit with team members and view the exhibits of the proposed project. Please be sure to provide your comments. We want to hear from you... and thank you for attending!

PRESENTATION WILL BEGIN IN



FUTURE I-49 SOUTH @ VEROT SCHOOL ROAD



This concludes our brief presentation of the proposed project. The Louisiana Department of Transportation, along with its federal partner, the Federal Highway Administration would like to thank you for watching this presentation.

Please proceed to Station 3 to visit with team members and view the exhibits of the proposed project. Please be sure to provide your comments. We want to hear from you... and thank you for attending!